



# TOP OF BED Cool Scheme



## BED THROW

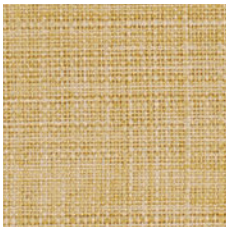


**Trendy Chevron 5**  
0809 - AAW

**Specs**  
100% Polyester  
Single Sided Reversible

Sizes	Dimensions	Quantity Per Case
King	102" x 52"	12
Queen	86" x 52"	12
Full	79" x 52"	12

## BED SKIRT



**Portobello Road**  
Hamster - AAW

**Specs**  
100% Polyester  
Tailored 5 pleat bedskirt  
with corner grippers

Sizes	Dimensions	Quantity Per Case
Twin	39" x 80"	6
Full	54" x 80"	6
Queen	60" x 80"	6
King	76" x 80"	6

\* Field measurement are required. Finished bedskirts length to be 1/2" above finished floor.  
\* Images are for representation purposes only. Actual Colors may vary slightly from those shown above.

**Cleaning Instructions Washable Bedding Items**  
Wash Cycle: Machine Wash in temperature not exceeding 160 F using commercial detergent.

- ◆ Do not use Caustic Soap
- ◆ Do not use Bleach
- ◆ Do not ring or crush
- ◆ Do not ring extract or crush
- ◆ No fabric softener

Drying Cycle: Tumble Dry on low. Remove immediately while still damp – dry.  
Do not overload dryer or use excessive heat.  
Finishing: Iron on lowest setting if necessary. Use cover cloth between Fabric and Iron.

To purchase, please contact AVM Enterprises.  
Strategic Sourcing Provider (DSP):

Customer Service:  
Tel: 800-218-3995  
Fax: 423-847-4701

AVM Enterprises, INC.  
P.O. Box 22283  
Chattanooga, TN 37422

[www.goavm.com](http://www.goavm.com)

All sizes are based on Hotel King, Queen, Full and Twin bed sizes. All products and services are manufactured by Valley Forge Fabrics, Inc. and not Wyndham Worldwide.  
Please refer to the applicable brand specifications for your property prior to purchasing products.

All products and services are manufactured and/or provided by Valley Forge Fabrics, Inc. and not by Wyndham Worldwide Corporation (WWC) or its affiliates. Neither WWC nor its affiliates are responsible for the accuracy or completeness of any statements made in this advertisement, the content of this advertisement (including the text, representations and illustrations) or any material on a website to which the advertisement provides a link or a reference.  
Please refer to the applicable brand specifications for your property prior to purchasing products.



# TOP OF BED Warm Scheme



## BED THROW



**Trendy Chevron 5**  
1819 - AAW

**Specs**  
100% Polyester  
Single Sided Reversible

Sizes	Dimensions	Quantity Per Case
King	102" x 52"	12
Queen	86" x 52"	12
Full	79" x 52"	12

## BED SKIRT



**Portobello Road**  
Lumber - AAW

**Specs**  
100% Polyester  
Tailored 5 pleat bedskirt  
with corner grippers

Sizes	Dimensions	Quantity Per Case
Twin	39" x 80"	6
Full	54" x 80"	6
Queen	60" x 80"	6
King	76" x 80"	6

\* Field measurement are required. Finished bedskirts length to be 1/2" above finished floor.  
\* Images are for representation purposes only. Actual Colors may vary slightly from those shown above.

**Cleaning Instructions Washable Bedding Items**  
Wash Cycle: Machine Wash in temperature not exceeding 160 F using commercial detergent.

- ◆ Do not use Caustic Soap
- ◆ Do not use Bleach
- ◆ Do not ring or crush
- ◆ Do not ring extract or crush
- ◆ No fabric softener

Drying Cycle: Tumble Dry on low. Remove immediately while still damp – dry.  
Do not overload dryer or use excessive heat.  
Finishing: Iron on lowest setting if necessary. Use cover cloth between Fabric and Iron.

To purchase, please contact AVM Enterprises.  
Strategic Sourcing Provider (DSP):

Customer Service: AVM Enterprises, INC.  
Tel: 800-218-3995 P.O. Box 22283  
Fax: 423-847-4701 Chattanooga, TN 37422

[www.goavm.com](http://www.goavm.com)

All sizes are based on Hotel King, Queen, Full and Twin bed sizes. All products and services are manufactured by Valley Forge Fabrics, Inc. and not Wyndham Worldwide.  
Please refer to the applicable brand specifications for your property prior to purchasing products.

All products and services are manufactured and/or provided by Valley Forge Fabrics, Inc. and not by Wyndham Worldwide Corporation (WWC) or its affiliates. Neither WWC nor its affiliates are responsible for the accuracy or completeness of any statements made in this advertisement, the content of this advertisement (including the text, representations and illustrations) or any material on a website to which the advertisement provides a link or a reference.  
Please refer to the applicable brand specifications for your property prior to purchasing products.